



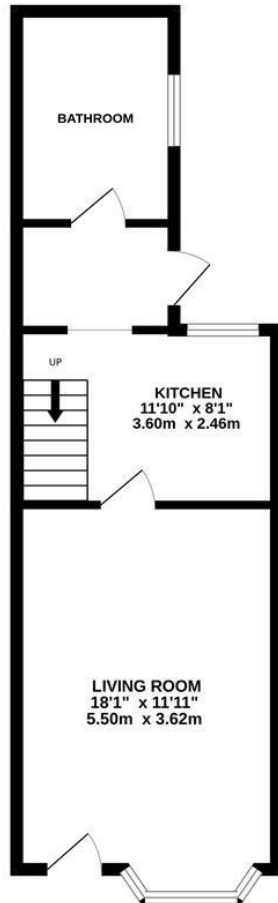
Oakfield Road, Hastings TN35 5AX

Offers in excess of £230,000

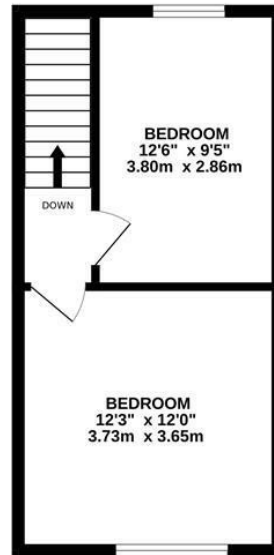


A beautifully presented two bedroom VICTORIAN TERRACED HOUSE located in a convenient location within easy reach of local shops and transport links at Ore Village along with popular schooling. Hastings Old Town and Hastings Country Park are also within easy reach. The accommodation is arranged as a BAY FRONTED LIVING SPACE with a feature brick fireplace, beams and ample room for a dining table. There is a separate kitchen FITTED WITH MODERN UNITS which offer ample storage space and a bathroom where there is a shower over the bath. The first floor houses TWO WELL-PROPORTIONED DOUBLE BEDROOMS. Externally the rear garden offers a lower courtyard seating area with stairs raiding to a decked area which provides the perfect spot to dine al-fresco.

GROUND FLOOR
408 sq.ft. (37.9 sq.m.) approx.



1ST FLOOR
296 sq.ft. (27.5 sq.m.) approx.



TOTAL FLOOR AREA: 704 sq.ft. (65.4 sq.m.) approx.

Whilst every attempt has been made to ensure the accuracy of the floorplan contained here, measurements of doors, windows, rooms and any other items are approximate and no responsibility is taken for any error, omission or mis-statement. This plan is for illustrative purposes only and should be used as such by any prospective purchaser. The services, systems and appliances shown have not been tested and no guarantee as to their operability or efficiency can be given.
Made with Metropix ©2020

